

# AUTOMATION



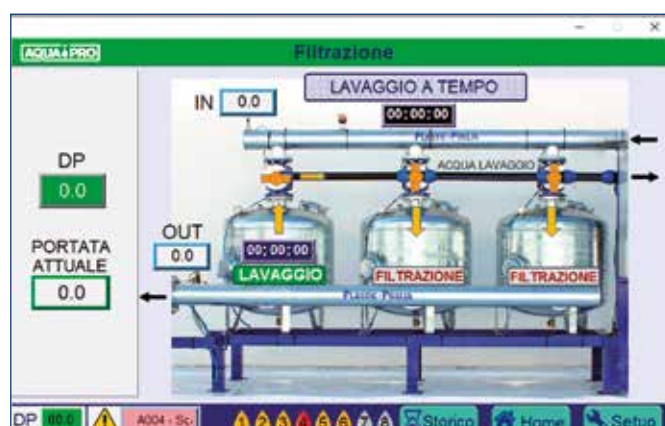


Irrigation system management and control software, **even remotely**, which allows the programming of irrigation cycles, the control of the filtering system, the correct working of the pumping station and the interaction with the weather data collected by sensor in the field.



### BASIC VERSION

- Manual management of irrigation sectors
- Irrigation cycles programming
- Filter station management
- Survey of the soil conditions
- Historicity of the data and send the collected data



### EXPANSION 1

Weather station data management:  
Pluviometry, humidity, temperature

### EXPANSION 2

Pumping stations management:  
Inverter control, operating temperature  
and ground water stress management

Code	Type	Price €
APROBASE	Basic version	on request
APROESP1	Expansion 1	on request
APROESP2	Expansion 2	on request

# CONTROLLERS

## FOR IRRIGATION AND FERTIGATION

### MR. CONTROL

Mr. Control is a latch type irrigation controller, innovative in its use: programming from a smartphone, via Bluetooth, thus converting the screen of your mobile device in the equipment interface.

The controller is available in two versions: Basic or Pro.

Code	Type	Price €
CB12V	Mr. Control Basic	540,00
CPI2V	Mr. Control Pro	840,00



### MATRIX Configurable

Matrix Configurable is an irrigation controller totally configurable depending on the needs of each installation, allowing the user to design their custom irrigation controller. The start of the different irrigation programs can run for time and/or demand. Irrigation and fertilization is carried out by time and allows the reading of the flow of water and fertilizers.

Code	Type
CMCU8	8 outputs 24V AC or 7 Latch outputs
CMCU16	16 outputs 24V AC or 15 Latch outputs
CMCU24	24 outputs 24V AC
CMCU32	32 outputs 24V AC

\* transformer not included

Code	Options
MRCM	Remote control Mobile
MCPH	pH control - EC reading

### MATRIX 132 3K

Due to its features, the Matrix 132 3K irrigation controller is one of the most versatile machines on the market. It is capable of controlling as many as three irrigation heads simultaneously while supplying as many as 9 fertilisers through each of them.

Code	Type
CMU16	16 outputs 24V AC
CMU32	32 outputs 24V AC
CMU48	48 outputs 24V AC
CMU64	64 outputs 24V AC

Code	Options
MOPCGPRS	PC + Mobile with GPRS modem (except SIM)
MOPCSE	PC + Mobile with Ethernet card
MSCPHEC	pH control - EC lecture (except probes)
MSCPHEC	pH - EC (except probes)
MSELI	Irrigation line expansion

# CONTROLLERS

## FOR IRRIGATION AND FERTIGATION



### MATRIX HIDRO 3K

Matrix Pro 3k fertigation control machine can handle as many as three irrigation heads. Up to 9 injection lines of fertilizers and one acid, 9 flow meter, 9 motor pumps, 200 valves, 30 dosing recipes and 20 automatic backflushing filters.

Code	Type
CMHU16	16 outputs 24V AC
CMHU32	32 outputs 24V AC
CMHU48	48 outputs 24V AC
CMHU64	64 outputs 24V AC
Code	Options
MOPCGPRS	PC + Mobile with GPRS modem (except SIM)
MOPCSE	PC + Mobile with Ethernet card

### MATRIX PRO 3K

Matrix Pro 3K fertigation control machine can handle as many as three irrigation heads. Up to 9 injection lines of fertilizers and one acid, 9 flow meter, 9 motor pumps, 200 valves, 30 dosing recipes 20 automatic backflushing filters.

Code	Type
CMPU16	16 outputs 24V AC
CMPU32	32 outputs 24V AC
CMPU48	48 outputs 24V AC
CMPU64	64 outputs 24V AC
Code	Options
MOPCGPRS	PC + Mobile with GPRS modem (except SIM)
MOPCSE	PC + Mobile with Ethernet card
MSELI	Irrigation line expansion

### ACCESSORIES

Code	Accessories for Matrix 132 series - Hidro - Pro 3K
SID8	8 inputs digital card
SIA8-D3	8 analog inputs + 3 digital inputs
SUD8	8 outputs digital card
SUD16	16 outputs digital card
SPHEC	pH - EC card
SOPH	pH probe
SOEC	EC probe
STPURV	Weather station (pluviometer, temperature, humidity, solar radiation, wind direction/speed). Including support without pole
SOUTEC	Ground moisture probe (temperature reading and EC)
MRI4AI4D	Receiving radio module (4 analog inputs, 4 digital inputs, 4 latch outputs including solar panel, charge limiter and battery). Except pole
PS12V	12V solar panel - 60V with charge and battery limiter

# FERTIGATION SYSTEMS

## MANUAL AND AUTOMATIC

### AQUAFERT MINI

Aquafert Mini manual fertigation systems are specifically designed for small to medium sized horticultural sites. They are appropriate for any type of crop and irrigation system: greenhouse or field agriculture, soil-based or hydroponic crops, timed irrigation, on demand. The dosage of fertilizers and acid (or base) is made through Venturi-type injectors, so the numbers of moving parts is minimal.

### Visio Option

Aquafert Mini Visio includes a pH and EC visualizer that makes it easier to select the ideal flow on each injection line. Moreover, it shows the temperature of the solution and emits a light signal that indicates a pH and/or conductivity alarm when there is a deviation in the measurement. Construction features identical to the Mini model.

Code	AQUAFERT MINI MANUAL
AFMMI3	Aquafert Mini - 3 channels - 500 lt
AFMMI4	Aquafert Mini - 4 channels - 500 lt
AFMMI5	Aquafert Mini - 5 channels - 500 lt



**AQUAFERT MINI  
MANUAL**

Code	VISIO OPTION
AFMMIV3	Option Visio - 3 channels - 500 lt*
AFMMIV4	Option Visio - 4 channels - 500 lt*
AFMMIV5	Option Visio - 5 channels - 500 lt*

\* pH - EC reading and water temperature

Code	AQUAFERT MINI AUTOMATIC
AFAMI3	Aquafert Mini Auto - 3 channels - 300 lt*
AFAMI4	Aquafert Mini Auto - 4 channels - 300 lt*
AFAMI5	Aquafert Mini Auto - 5 channels - 300 lt*

\* programmer and pH and EC probes not included



**AQUAFERT MINI  
VISIO MANUAL**

# FERTIGATION SYSTEMS

## MANUAL AND AUTOMATIC

### AQUAFERT MAXI

Aquafert Maxi is a fertilizer designed for medium and large surfaces. The dosage of fertilizers and acids (or based) is made through Venturi injectors.

Aquafert Maxi is manufactured on a solid stainless steel structure with a simple, reliable and robust design.



Code	AQUAFERT MAXI MANUAL
AFMMA3	Aquafert Maxi Manual - 3 channels - 1000 lt
AFMMA4	Aquafert Maxi Manual - 4 channels - 1000 lt
AFMMA5	Aquafert Maxi Manual - 5 channels - 1000 lt

Code	AQUAFERT MAXI AUTOMATIC
AFAMA3	Aquafert Maxi Auto - 3 channels - 600 lt*
AFAMA4	Aquafert Maxi Auto - 4 channels - 600 lt*
AFAMA5	Aquafert Maxi Auto - 5 channels - 600 lt*

\* programmer and pH and EC probes not included

### ACCESSORIES

Code	Accessories Aquafert Mini
VENTUR00	Venturi ½" PVC
VIMI20	PVC Ø20mm tilted trim valve
FMI500	50 - 500 lt/h flowmeter
EVM14	4mm electrovalve
CDMIM	Complete manual dosing channel
CDMIA	Complete automatic dosing channel
CAMI1-10	Arad ¾" counter with 0,1-1 e 10 pulse emitter and 10 lt/pulse

Code	Accessories Aquafert Maxi
VENTUR01	Venturi ¾" PVC
VIMA20	PVC Ø20mm tilted trim valve
FMA1200	100 - 1200 lt/h flowmeter
EVMA4	8mm electrovalve
CDMAM	Complete manual dosing channel
CDMAA	Complete automatic dosing channel
CAMA1-10	Arad ¾" counter with 0,1-1 e 10 pulse emitter and 10 lt/pulse

# RADIO COMMUNICATION

## RADIOCOM

Radiocom is a wireless communication system that allows the controllers to be connected with inputs and outputs remotes modules.

Plastic-Puglia suggest using this wireless Radiocom system in installations whose great geographical extension or numerous difficulties installing traditional wired systems makes the installation a huge obstacle of large expenditure.

Code	Type	Price €
MOPRA	Radio	1.770,00



## MATRIXCOM WEB

Matrixcom Web Server software is an application that manages Plastic-Puglia irrigation programmers from anywhere in the world, anytime.

Learn about the status of the plants and change both the schedule and the configuration.

Stores all the informations from sensors connected to the programmer, which can be exported in different formats and generates charts.

Can be controlled with a smartphone or tablet, thanks to the app available for iOS and Android or with any PC connected to the Internet.

Code	Type
MCOIA	Annual subscription

